

# AZURE

DESIGN | ARCHITECTURE | INTERIORS | CURIOSITY

AZUREMAGAZINE.COM

**THE MILAN REPORT**

The latest furniture trends P. 82

**BRILLIANT TEXTILES**

19 room-changing options P. 88

**BUILD IT YOURSELF**

Where to go for prefab parts P. 93

## THE BEST ARCHITECTURE & DESIGN

2011  
AZ AWARDS  
ANNUAL

ARCHITECTURE / INTERIORS /  
FURNITURE / LIGHTING /  
LANDSCAPES / CONCEPTS /  
A+ STUDENT AWARD

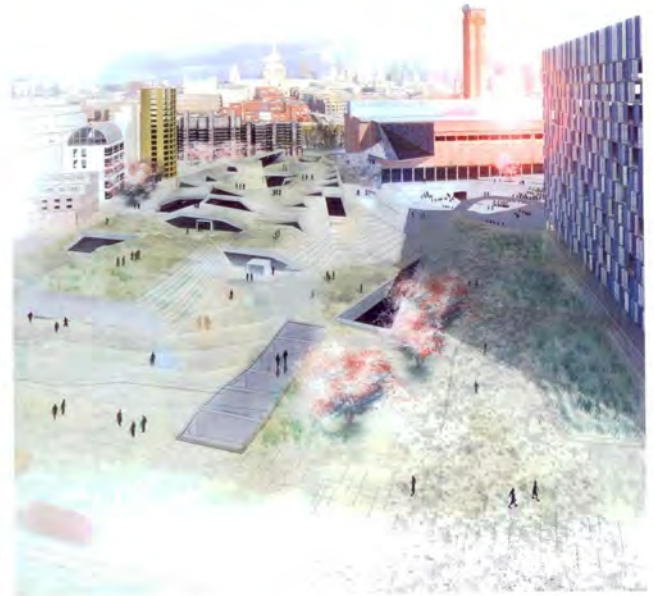
CAN/US \$7.95  
JULY/AUGUST 2011  
PM40048073 R09064





35

PEOPLE'S CHOICE WINNER



37



2011 FINALISTS



PEOPLE'S CHOICE WINNER

36



38



saying goodbye, without adding to one's carbon footprint. [thespiritree.com](http://thespiritree.com)

**34 PROJECT:** COMPOSTING SHED **LOCATION:** EDINBURGH **FIRM:** GROVES-RAINES ARCHITECTS, EDINBURGH/GLASGOW **TEAM:** NICHOLAS GROVES-RAINES WITH LUCY ANDERSON

Rebar is known for its strength rather than its beauty, but given the talents of an architect like Nicholas Groves-Raines even rusted steel can ascend to poetic heights. To create a composting shed in the corner of a residential garden in Edinburgh, he wove the industrial staple as if it were willow boughs, constructing a meandering wall that wraps around a five-tonne boulder. He eschewed a traditional foundation and instead lodged the vertical reinforcing bars right in the ground. The shed is

topped with a rubber-lined EPDM roof planted with swaying grasses. [grovesrainearchitects.com](http://grovesrainearchitects.com)

**35 PROJECT:** OMS STAGE **LOCATION:** WINNIPEG **FIRM:** 5468796 ARCHITECTURE, WINNIPEG **TEAM:** SHARON ACKERMAN, MANDY ALCORN, KEN BORTON, MICHELLE HEATH, AYNLEE HURDAL, JOHANNA HURME, CRISTINA IONESCU, GRANT LABOSSIERE, JAYNE MILES, COLIN NEUFELD, ZACH PAULS, SASA RADULOVIC AND SHANNON WIEBE

Every city should have one of these: an open-air performance venue with walls that fold back to reveal a stage for moonlit concerts. This was achieved by 5468796 Architecture with a 73-square-metre pavilion made of poured concrete and draped with a dynamic membrane of

diamond-shaped aluminum extrusions that form a flexible curtain. When the cube is open, it takes on a whole new form, with the curtain acting as an acoustic backdrop. When it's closed, the geometric surface refracts light, providing an ideal visual playground for lighting programmers and DJs to create moody effects. [5468796.ca](http://5468796.ca)

**A+ AWARD FOR BEST STUDENT PROJECT**

**36 PROJECT:** VISIONS OF SETTLEMENT FOR PORT-AU-PRINCE **DESIGNER:** KATHERINE KOVALCIK **SCHOOL:** UNIVERSITY OF WATERLOO, ONTARIO

After last year's earthquake in Haiti that left some 1.5 million people without shelter or water, Katherine Kovalcik put forth a vision for a

flexible housing structure that can be erected quickly, using materials such as bamboo, soil and rubble. Her proposal would provide immediate shelters that could evolve into permanent two-storey homes with self-sustaining rooftop water collection systems – the basic necessities to help displaced Haitians rebuild their lives. [uwaterloo.ca](http://uwaterloo.ca)

**37 PROJECT:** SUBTERRANEAN APERTURES **DESIGNER:** STEPHEN KAYE **SCHOOL:** PARSONS THE NEW SCHOOL FOR DESIGN, NEW YORK

Big cities are filled with underground walkways that connect buildings to subway lines but are starved of natural light. Stephen Kaye's project proposes a way to bring daylight to these subterranean worlds, particularly those surrounding Penn Station in New York. The plan

calls for strategically placed glass openings at street level that would funnel light downward and connect commuters with the city above. [newschool.edu/parsons](http://newschool.edu/parsons)

**38 PROJECT:** THE CAVE **DESIGNER:** GONZALO VAÍLLO MARTÍNEZ **SCHOOL:** ETS ARQUITECTURA Y GEODÉSIA, UNIVERSIDAD DE ALCALÁ, MADRID

The ominously named Cave explores the valuable yet untapped real estate surrounding London's Tate Modern. At the heart of this ambitious plan lies a buried auditorium with various entryways that lead theatregoers through a labyrinth of pathways. Above ground, the only sign of what's happening below are the geometric skylights that break through to the park. [uah.es](http://uah.es)